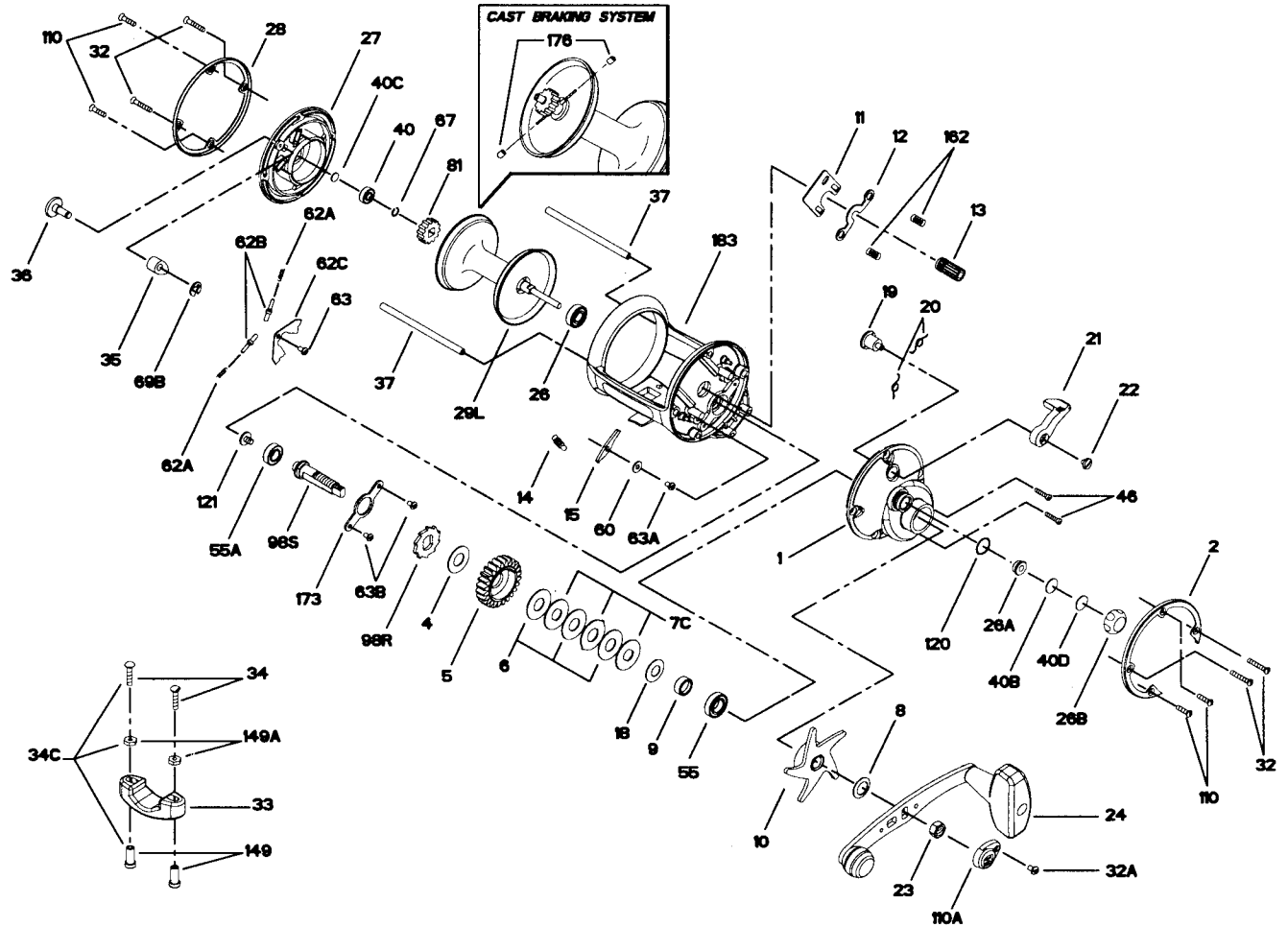




## PARTS AND PRICE LIST FOR MODEL 545GS



KEY NO.	PART NO.	DESCRIPTION	PRICE	KEY NO.	PART NO.	DESCRIPTION	PRICE
1	1-555	Right Side Plate	\$7.50	35	35-310N	Click Tongue	\$1.00
2	2-555	Right Side Ring	6.00	36	36-555	Click Button	1.10
4	4-60	Fiber Washer	.40	37	37-535	Frame Post (2 req.)	1.50
5	5-545	Main Gear	6.50	40	40-320	L.S. Spool Ball Bearing	10.60
6	6-49	Friction Drag Washer (3 req.)	.60	40B	40C-555	Metal Thrust Washer	.40
7C	7C-49	Metal Drag Washer (Set)	2.70	40C	40C-310	Metal Thrust Washer	.40
8	8-60	Tension Spring Washer	.50	40D	40D-555	Rubber Thrust Washer	.40
9	9-555	Spacing Sleeve	.90	46	46-4300	Side Plate Screw (2 req.)	.50
10	10-555	Drag Star	6.50	55	55-12H	Ball Bearing	13.20
11	11-555	Eccentric Jack	1.35	55A	20-722	Ball Bearing	12.90
12	12-555	Pinion Yoke	1.15	60	60-555	Washer	.40
13	13-545	Pinion Gear	4.50	62A	62-545	Click Spring (2 req.)	.40
14	14-330	Dog Spring	.45	62B	62B-310	Click Pin (2 req.)	.60
15	15-340	Dog	1.20	62C	62C-310	Click Spring Cover	2.20
18	18-505	Tension Spring Washer	.95	63	63-500S	Click Spring Screw	.80
19	19-555	Eccentric	1.75	63A	22-750	Dog Screw	.40
20	20-155	Eccentric Spring (2 req.)	.40	63B	63-330	Bearing Retainer Screw (2 req.)	.80
21	21-310	Eccentric Lever	3.25	67	67-9	Lock Ring	.40
22	22-310	Eccentric Screw	.50	69B	69B-600	Retaining Ring	.90
23	23-555	Handle Nut	1.00	81	81-555	Click Ratchet	.70
24	24-555	Handle	9.00	98R	98-555	Main Gear Ratchet	1.40
26	26-25	R.S. Screw Ball Bearing	13.25	98S	134-555	Gear Stud	3.50
26A	26-555	Right Side Bushing	1.00	110	110-50	Side Plate Short Screw (4 req.)	.50
26B	26B-555	Spool Tension Control Cap	1.75	110A	110A-555	Handle Nut Lock Cap	.70
27	27-545	Left Side Plate	5.00	120	120-113H	O-Ring	.50
28	28-555	Left Side Ring	6.00	121	121-555	Bearing Screw	1.70
29L	29L-545	Aluminum Spool Assembly	17.50	149	149-45	Rod Clamp Nut (2 req.)	.90
32	32-310	Frame Post Screw (4 req.)	.40	149A	149-200	Rod Clamp Hex Nut (2 req.)	.40
32A	32-15	Handle Lock Screw	.40	162	162-130	Clutch Spring (2 req.)	.40
33	33-113	Rod Clamp	4.00	173	173-555	Bearing Retainer	2.00
34	34-45	Rod Clamp Screw (2 req.)	.90	176	176-555	Casting Brakes (2 req.)	.50
34C	34C-45	Rod Clamp Screw w/Nuts	2.25	183	183-545	Frame	20.00